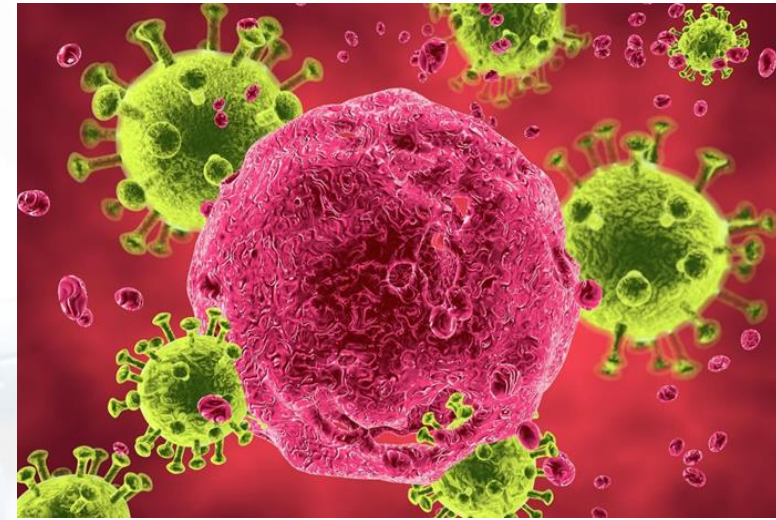




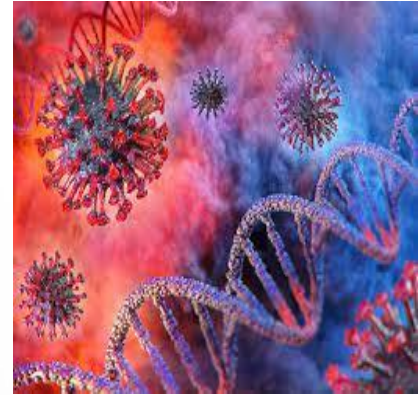
Track: A
**Basic Science (Biology &
Pathogenesis)**

Rapporteur: Londiwe Nonkonyana (S.A)

- ❑ **HIV-1 Gag gene mutations** significantly increase between drug-naive and protease inhibitor treated patients
- ❑ Strengthen the capacity and manufacturing
- ❑ **Diagnosis of emerging viruses** must be improved
- ❑ Promote self-testing
- ❑ Initiation of HIV diagnostics, vaccines and therapeutics in Africa.



- ❑ **Botswana**-3rd highest prevalence of HIV followed by **South Africa**-4th highest globally
- ❑ Younger men (<35yrs) , educated, married and inconsistent with condom use with their partners-associated with **undiagnosed HIV infections**
- ❑ **UNAIDS 95-95-95** fast track targets for the year 2030- only achieved the last target



- ❑ **The product Nkabinde** a traditional medicine used for Syphilis-for efficacy against STIs and HIV.
- ❑ Majority use traditional medicines because of belief in holistic healing and affordability.
- ❑ Several in vitro studies have shown potential use of traditional medicine for management of HIV.
- ❑ Combination ART has been found to have transformed HIV-1 infection into a controllable chronic disease.

- ❑ **Rapid molecular diagnostic tests** needed at PHC level with affordable and accessible medicines and vaccines.
- ❑ Regulatory certainty and consistency with **improved global surveillance** as well as addressing infrastructural gaps.
- ❑ There should be **digitization and innovation** of funds through the RND funding.

Ms. Matsoso Malebona Precious (S.A)



- ❑ Further **investigate** the **mutations of protease** inhibited based regimen using cohort studies into in vitro experiments
- ❑ A **Call for local production** with mandatory million additional vaccination doses, diagnostics and therapeutics -equitable access (tripodal approach)
- ❑ It was recommended that **targeted interventions** be implemented using integrated approach -HIV self-testing, testing at workplace, barbers, couples testing etc.



Ndiyabulela (Xhosa)